



Product card - **Wall  
sandwich panel with  
visible fastening**

**SPW-S CORE<sup>PIR</sup>**

**STEEL SERVICE CENTRE**



# Product card

## Wall sandwich panel with visible fastening

**SPW-S CORE<sup>PIR</sup>**



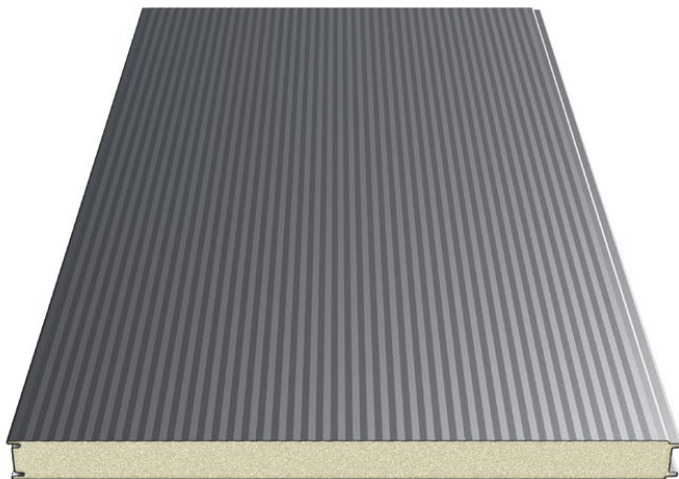
Scan the code  
and learn more  
about the product!

Sandwich panels are high-performance products that meet the requirements of the modern construction market.

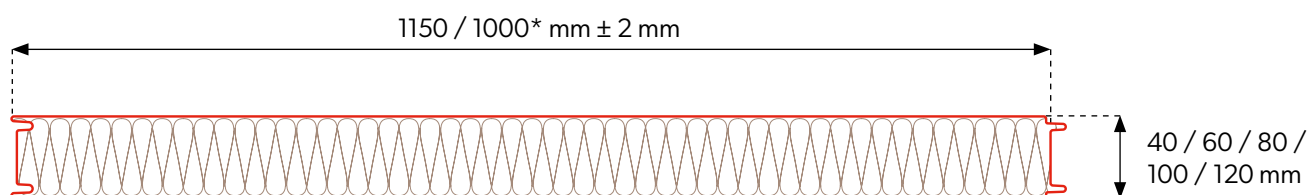
Suitable for the construction of exterior and interior wall claddings and ceilings of industrial or public utility facilities.

For the investor, it is a high quality product at a good price. For architects, it offers many possibilities in relation to the design intent. For construction managers, quick and easy installation. For construction supervision, friendly and transparent possibilities to verify the course of the entire process of construction execution from delivery until build acceptance.

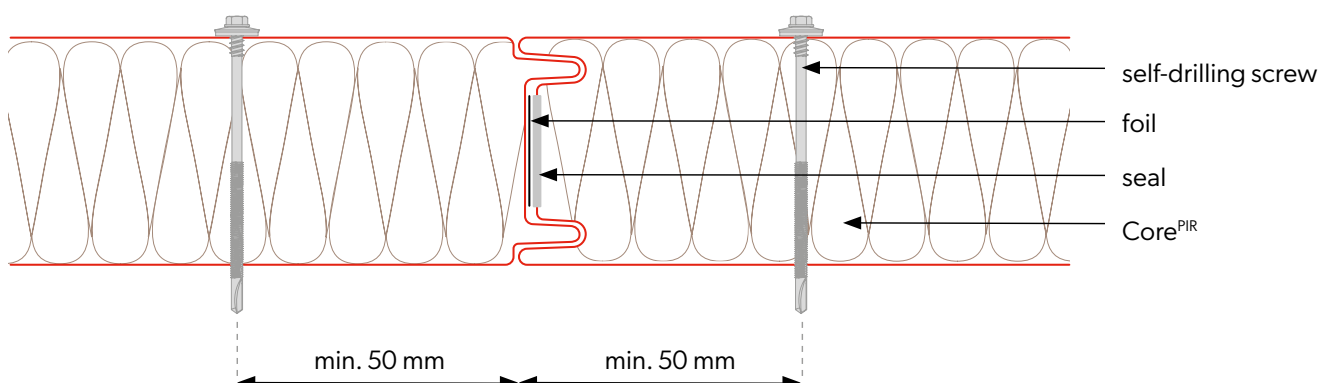
# Technical information



## Panel cross-section



## Joining the panels



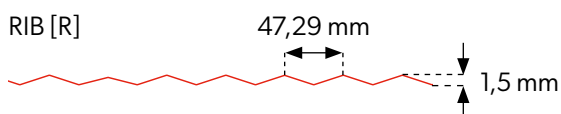
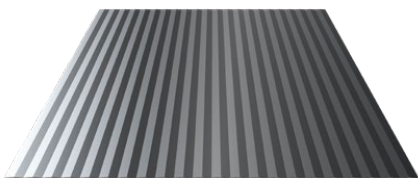
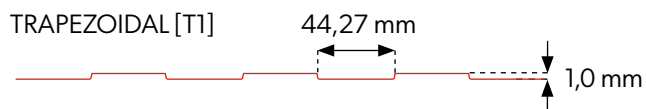
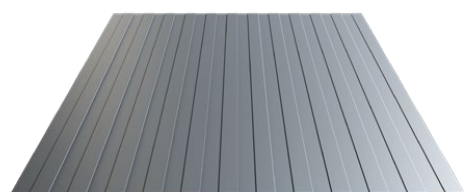
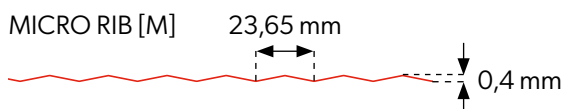
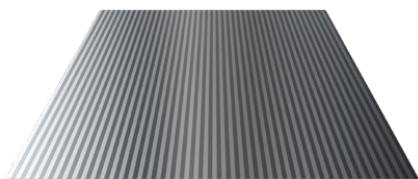
## Technical information

Core	PIR				
Density [kg/m³]	40 ± 3				
PIR panel thickness [mm]	40	60	80	100	120
Weight [kg/m²]	8,7	9,5	10,3	11,1	11,9
Effective width [mm]	1150, 1000*				
Total width [mm]	1171, 1021*				
Min. panel length [m]	2,5	2,0			
Max. panel length [m]	15,0				
Outer/inner sheet thickness [mm]	0,3-0,7 / 0,3-0,7				
U-value [W/m²K]	0,55	0,37	0,28	0,22	0,18
Fire spread degree	NRO				
Type of external / internal profiling	[M], [T1], [R], [F] / [T1], [M], [F]				
External / internal corrosion resistance	C1, C2, C3 (C4 ÷ C5) / A1 (A2 ÷ A5)				
Standard coatings	Poliester Interior [INT], Poliester Standard [RAL], HERCULIT [HC], MULTILAYER 40 [MLT]				
Special coatings	PVDF, PUR, PVC (P), PVC (F) - FoodSafe				
Accessories	fixing system, seals, flashings, rooflight				



\* Module availability is agreed individually with the sales department.

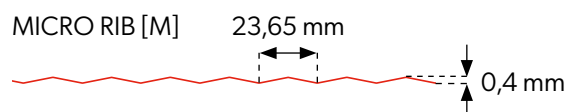
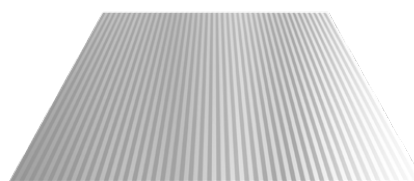
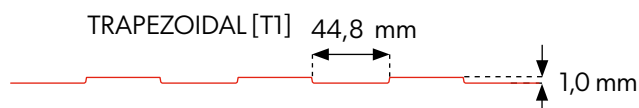
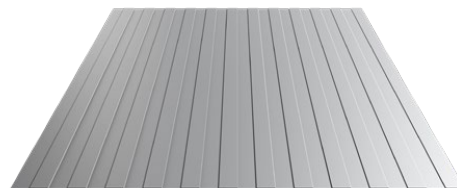
## External profiling



FLAT [F]



## Internal profiling



FLAT [F]



ATTENTION! Due to the structure of sandwich panels with FLAT [F] profiles, the so-called effect may occur. „waves“ of the sheet metal. This is a natural phenomenon for this type of products. We recommend contacting the technical department to choose the optimal solution.



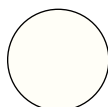
Internal and external profiling are available in any configuration.

## Coatings and colors

### **POLIELSTER Interior [INT]** - Available colors for interior cladding



INT  
9002



INT  
9010

### **POLIELSTER Standard [RAL]** - Available colors for exterior cladding



RAL  
1002



RAL  
1015



RAL  
3000



RAL  
3005



RAL  
3009



RAL  
3011



RAL  
5010



RAL  
6005



RAL  
6011



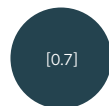
RAL  
6020



RAL  
6029



RAL  
7016



RAL  
7024



RAL  
7035



RAL  
8004



RAL  
8017



RAL  
8019



RAL  
9002



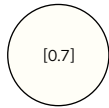
RAL  
9005



RAL  
9006



RAL  
9007



RAL  
9010

### **HERCULIT [HC]**



HC 3009



HC 7016



HC 8004

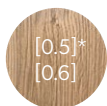


HC 8017

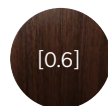


HC 9005

### **MULTILAYER 40 [MLT]** - Available colors for exterior cladding



SL252  
Winchester



SL55  
Venge



SL59  
Dark Oak



SL65  
Golden  
Oak



Printing technology does not allow faithful rendering of colors. Therefore the colors shown are indicative and may differ from actual colors.



In addition, on individual order, non-standard colors and coatings are available, outside the palette shown (PVDF, PUR, PVC (P), PVC (F) - FoodSafe).

## Coating parameters

Code	Coating thickness	Corrosion resistance	UV resistance
POLIELSTER Interior [INT]	15 µm	RA2	Not applicable
POLIELSTER Standard [RAL]	25 µm	RC3	RUV2
HERCULIT [HC]	35 µm	RC4	RUV4
MULTILAYER 40 [MLT]	40 µm	RC3	RUV3

## Notes





Modular roofing tiles  
**MODULAR SERIES**



Compact roofing tiles  
**COMPACT SERIES**



Steel roofing tiles  
**CLASSIC SERIES**



Retro roof tiles  
**RETRO SERIES**



Roof panels  
**PANEL SERIES**



INTEGRATED  
**PV PANELS**



Steel roof gutter system  
**INGURI**



**TRAPEZOIDAL**  
SHEETS



**FLAT METAL**  
SHEETS



**FLASHINGS**



**ACCESORIES**



Roof Sandwich  
PANELS



Wall Sandwich  
PANELS



Facade cladding  
**SKRIN, LINEA**



Wall cassette &  
**PROSYSTEM**



Uncoiling and slitting  
**SERVICES**



Flat sheets and cutting  
**SERVICES**



**PERFORATION**  
of sheets