

ALUZINC, ZINC and MAGNELIS® coatings

ZINC [ZN]

The sheets are hot dip galvanised on both sides in a continuous process which protects the steel core against corrosion. They feature a smooth and uniform surface that meets the highest aesthetic requirements.



ALUZINC [AZ]

It is a steel sheet coated on both sides with an aluminium-zinc alloy in a process similar to hot-dip galvanising. It thus meets the most stringent requirements for sheet metal resistance to atmospheric corrosion and corrosion in humid environments. It additionally has a protective Easyfilm polymer coating which also protects the edges of the steel coils and enhances the aesthetics of the surface.

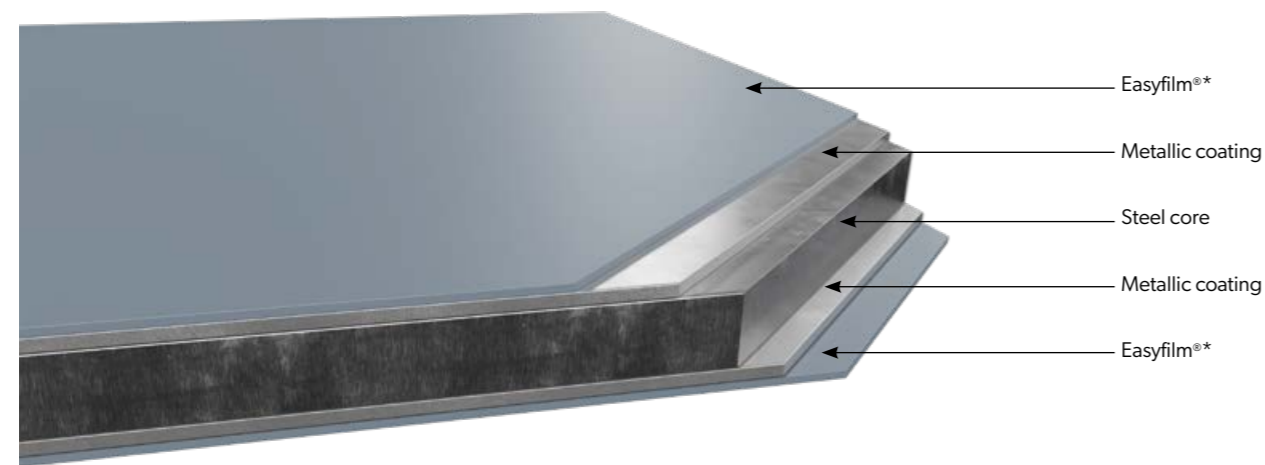


MAGNELIS® [ZM]

Magnelis® is a flat carbon steel, coated on both sides with a zinc-aluminium-magnesium alloy. It is distinguished by its excellent corrosion resistance in outdoor applications - at least three times better than galvanised steel and full protection on the cut edges, thanks to its self-healing properties. Magnelis® is used, among other things, in the construction industry for structural components, electrical equipment and infrastructure for agriculture, transport, solar structures and industry.



Sheet section



* Aluzinc only.

Coated sheets

COATED SHEETS [HC, UTK, ICep, INT, RAL]

Coated sheets are manufactured from hot-dip galvanised charge or coated with a dedicated alloy (zinc, magnesium zinc, aluminium zinc). This material, cleaned during pretreatment, undergoes passivation processes and is then multi-coated with one of the many available coatings. This provides excellent protection of the metallic layers and the steel core against atmospheric agents. Coatings can vary in thickness, colour, and surface texture.

MULTILAYER SHEET, TABLET SHEETS

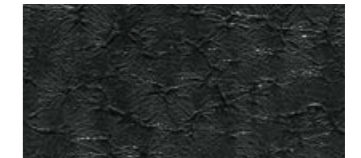
SP35 Multilayer has a 40 µm thick polyester varnish with Z275 zinc or ZM120 zinc-magnesium coating. It is characterised by the structure of the wood and adequate protection against corrosion and UV radiation.

We offer metal sheets for the production of wet-erase boards (**CHALKBOARD [C]**) as well as dry erase boards (**MARKERBOARD [M]**) with additional film protection.

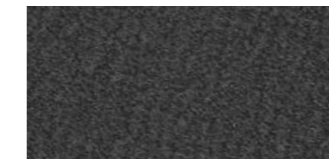
HERCULIT [HC]



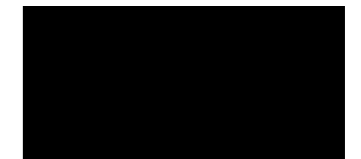
ICE COVER ZM [ICep]



ULTIMAT [UTK]



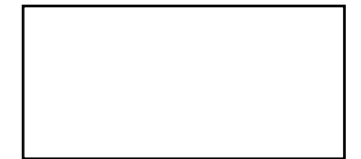
POLIESTER Standard [RAL]



SP35 Multilayer [SP35/MULTI]



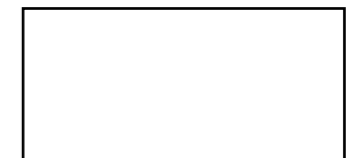
POLIESTER Interior [INT]



CHALKBOARD [C]



MARKERBOARD [M]



Coated sheet cross-section

